

ACCOMMODATION GUIDE



CONTACT US

R603 Umbumbulu Road, Camperdown, Pietermaritzburg, KwaZulu-Natal
T: +27 (0)31 781 8000 | E: info@tala.co.za
For bookings or more information, email reservations@tala.co.za



PART OF THE
DREAM
HOTELS & RESORTS FAMILY

TALA LODGES & COTTAGES



PAPERBARK HOUSE & RONDAVEL



Paperbark House is situated at Paperbark Lodge. The original old farmhouse has been carefully restored to maintain the essence of a bygone era. The six bedrooms with en suite bathrooms lead on to a central lounge area and out on to a typical farmhouse veranda, which looks on to the surrounding garden. The Paperbark rondavel and rock pool are just a step away. The Paperbark Restaurant is conveniently located around the corner. The rondavel serves as a perfect bridal prep room or even just as an exclusive getaway. Please note that this is **not self-catering accommodation** and there are **no fridges or TVs** available in the rooms.

5 x twin bedrooms with a bath and shower
1 x double bedrooms with a shower



PAPERBARK LODGE



Paperbark Lodge centres on the 'Old Farm Barn' with the original door still in place. Beautifully restored, with a large fireplace, polished floors and fold back windows that allow natural light and ventilation, this is the venue for the lodge's restaurant. The room décor is simple, yet dramatic, with wildlife paintings, shale walls and clever use of wood finishings. The lodge surrounds an open grass area with spectacular views of the open plains on the reserve. Paperbark Room 9 can be used as a bridal prep room and is perfect for a groom or bride the night before the wedding. Be sure to ask about the outside showers when booking your Paperbark room. Please note that this is **not self-catering accommodation** and there are **no fridges or TVs** available in the rooms.

5 x double bedrooms with a bath
7 x twin bedrooms with a bath



LEADWOOD COTTAGES



Leadwood Lodge is truly something special. There are six cottages in total, situated adjacent to the grand Leadwood Manor House. The cottages are identical inside and are ideally used as honeymoon suites and make for special romantic getaways. Each cottage has its own private deck. **The one cottage is situated near a dam.** The rest of the cottages are surrounded by green bush. The cottages were built by a team of artisans with locally sourced shale. Leadwood Lodge combines exceptional architecture, towering thatch and resplendent finishes against a backdrop of breathtaking natural beauty. The décor is an eclectic merging of antique and organic Africa with one of a kind artistic elements. The final results of this lodge are a masterpiece of earth, water, glass and hardwoods. Please note that this is **not self-catering accommodation**, however, mini fridges are available in the rooms.

6 x double bed cottages with a bath and shower



LEADWOOD MANOR HOUSE



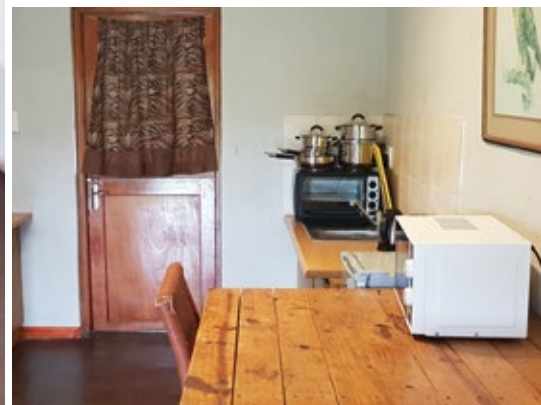
The newest addition to Tala is Leadwood Manor House, which is an exclusive four bedroom lodge that can be found a short distance from Leadwood Lodge. The manor house offers an exclusive restaurant overlooking a lap pool and the beautiful African bush. Enjoy the tranquil surrounds as you relax at the poolside, basking in the sun or ask your lodge manager about activities on offer. Leadwood Manor House is ideal for romantic getaways, group bookings or small, intimate weddings. The Presidential Suite and additional three rooms in the house are a special space created to rejuvenate the mind, body and soul. This is **not self-catering accommodation** and there are **no fridges** available in the rooms. The Presidential Suite does have a TV with selected DSTV channels.

Please note that this lodge is only suited to adults.

- 2 x double bedrooms with a bath and shower
- 1 x double bedroom with a shower (Round Room)
- 1 x double bed Presidential Suite with a bath and shower, dressing room, lounge and private deck area



FISHERMAN'S COTTAGES 1 & 2



These self-catering cottages offer splendid views of the riverine bush and surrounding open plains and are easily visible as you drive on to the reserve. Comfortably accommodating two people, each cottage has a private concealed boma area that is ideal for a relaxing braai under the stars or just to sit around the fire. Fisherman's Cottage is a serene retreat where you can unwind while looking out over the Fisherman's Dam, listening to the calls of African Fish Eagles and watching the wildlife grazing from the comfort of your veranda. Guests also have the option of dining at Paperbark Restaurant at Paperbark Lodge. Bookings must be made in advance.

WE PROVIDE:

FURNITURE

- Double bed/two single beds (depending on the unit)
- Cupboard
- Dressing table and stool
- Dinner table and two chairs

CUTLERY, CROCKERY AND UTENSILS

- Champagne and red wine glasses
- Beer glasses
- Tea cups and saucers
- Dinner plates
- Breakfast bowls
- Teaspoons
- Soup spoons and pasta spoons
- Knives and forks
- Steak knives
- Ladle
- Spatula
- Grater
- Whisk
- Bottle opener
- Can opener

- Potato peeler
- Cutting board
- Pots (small, medium and large)
- Frying pan
- Dish cloths

ELECTRICAL APPLIANCES

- Kettle
- Toaster
- Microwave
- Two-plate stove
- Bar fridge
- Heater

HOUSEKEEPING

- Linen
- Bath and hand towels
- Rubbish bins

PLEASE BRING YOUR OWN:

- Charcoal, matches and firelighters
- Firewood (available for purchase at R50 per bag)
- Torch
- Extra blankets (in winter)
- Swimming towels

FIGTREE HOUSE



4 x twin bedrooms with a bath and shower
1 x double bedroom with a bath and shower

Figtree House is a fully-serviced house for groups of up to ten. The homestead has an old farmhouse atmosphere and each room has direct access to the surrounding garden. A veranda off the main lounge overlooks the boma braai area with the rolling hills of Tala in the background. All five rooms have an en suite bathroom, opening up to a communal open-plan lounge area with a bar. Just a short walking distance from the Figtree Barn and the Figtree Auditorium, Figtree House is the perfect place to rest after a long day of conferencing or even a night after a wedding. Due to its close proximity to the Figtree Barn, Figtree House is also ideal as a wedding party preparation area. Please note that a fridge and coffee and tea facilities are available in the kitchen only. Guests also have the option of dining at Paperbark Restaurant at Paperbark Lodge. Bookings must be made in advance.

WE PROVIDE:

FURNITURE

- Double bed/two single beds (depending on the unit)
- Cupboard
- Dressing table and stool
- Dinner table and two chairs

CUTLERY, CROCKERY AND UTENSILS

- Champagne and red wine glasses
- Beer glasses
- Tea cups and saucers
- Dinner plates
- Breakfast bowls
- Teaspoons
- Soup spoons and pasta spoons
- Knives and forks
- Steak knives
- Ladle
- Spatula
- Grater
- Whisk
- Bottle opener
- Can opener

- Potato peeler
- Cutting board
- Pots (small, medium and large)
- Frying pan
- Dish cloths

ELECTRICAL APPLIANCES

- Kettle
- Toaster
- Microwave
- Two-plate stove
- Bar fridge
- Heater

HOUSEKEEPING

- Linen
- Bath and hand towels
- Rubbish bins

PLEASE BRING YOUR OWN:

- Charcoal, matches and firelighters
- Firewood (available for purchase at R50 per bag)
- Torch
- Extra blankets (in winter)
- Swimming towels

FIGTREE TENTED CAMP



This tented campsite is situated across from Figtree House and Figtree Barn. Each tent sleeps two adults. The tents include beds, electricity and shared ablution facilities. Basic linen (a bed sheet, pillow, pillow case, blanket and towel) will be provided. A minimum of six tents must be booked per stay. The rate for the tents is exclusive of breakfast. Guests have the option of booking for breakfast at Paperbark Restaurant at Paperbark Lodge. The tents have **no catering facilities** but this can be arranged for group bookings. Please enquire with us when making your booking.

12 x canvas tents with 2 single beds

