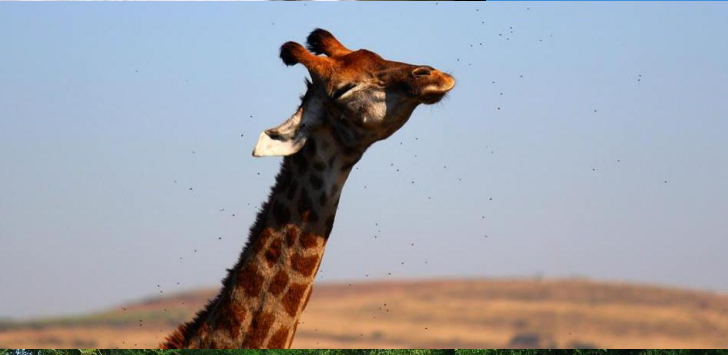
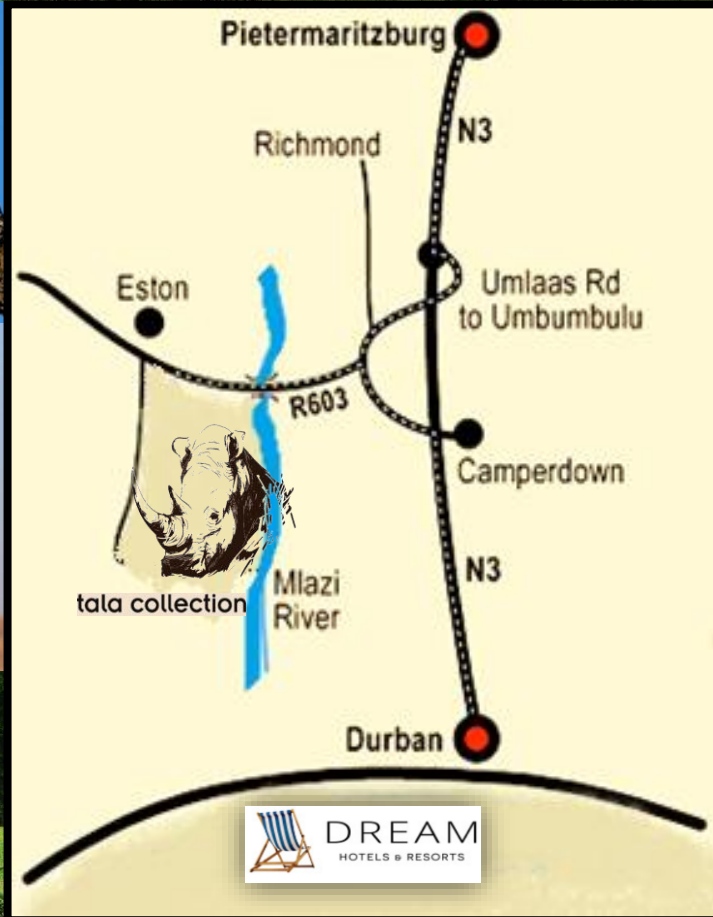




# tala collection

PRIVATE GAME RESERVE



District Road 362, Umbumbulu Road (R603), Camperdown, Kwa-Zulu Natal  
Tel: (+27) (0) 31 781 8000 Email: [info@tala.co.za](mailto:info@tala.co.za)  
For More info or bookings contact reception on [reservations@tala.co.za](mailto:reservations@tala.co.za)

# Tala Lodges & Cottages



# Aloe Lodge

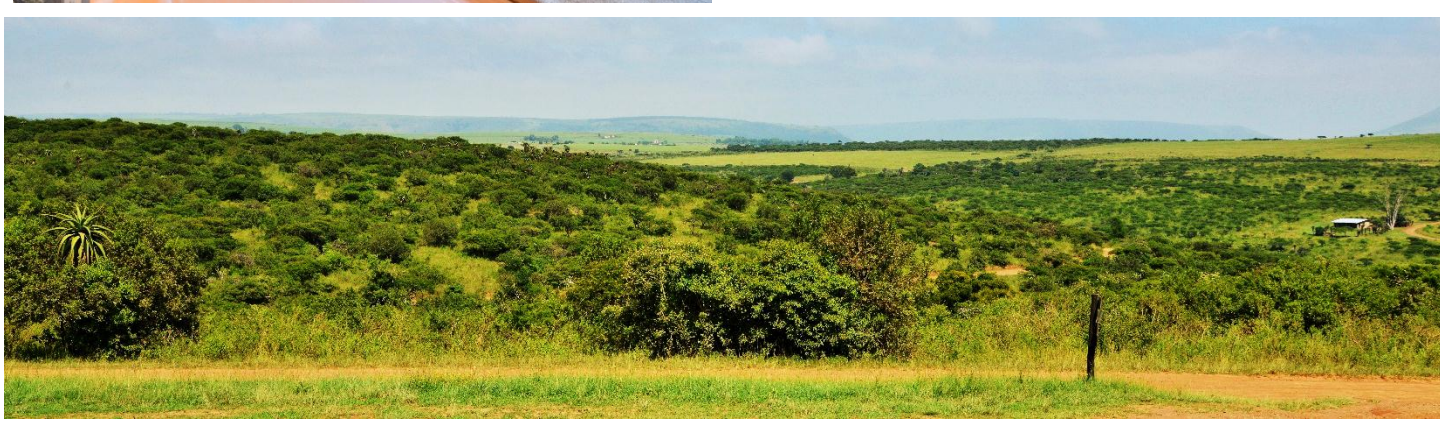
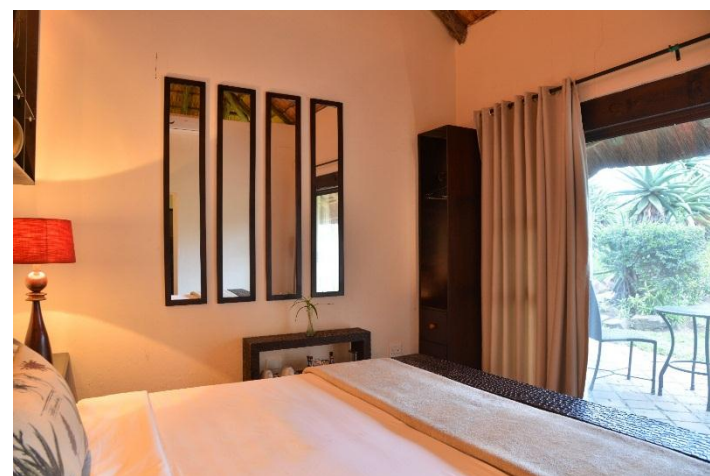


- 4 x twin bedded rooms with a bath and shower
- 3 x double bedded room with a bath and shower
- 1 x double bedded room with a shower

Aloe #2 has an inter-leading door to Aloe #1, A twin bedded room that can be used for a family room. Aloe Lodge enjoys an elevated view of the reserve that spans out over the grasslands, a favourite grazing area of the reserves antelope, giraffe and hippo. Seven comfortable furnished rooms with bathroom ensuite are positioned around the lodge's natural gardens which are kept trim by the resident family of warthogs. Aloe Lodge is the main hub of Tala, with all the activities on your doorstep. The Tala Restaurant, The Tala Boma and iDube Conference Room are all located here making it the ideal venue for day conferences, special occasions and tour groups.



**R1 295.00**  
**Per Room**



# Mahogany House & Rondavel



5 x twin bedded rooms with a bath and shower

1 x double bedded rooms with either a bath and shower. Mahogany House is situated adjacent to Paperbark Lodge. The original old farmhouse has been carefully restored to maintain the essence of a bygone era. The six bedrooms with bathrooms ensuite lead on to a central lounge area and out onto a typical farmhouse veranda which looks onto the surrounding garden.



The Mahogany rondavel and Rock Pool are just a step away. The Paperbark Restaurant is conveniently located around the corner. The Rondavel is perfect for a bridal prep room or just an exclusive get away.



**R1 620.00**  
**Per Room**



## Paperbark Lodge



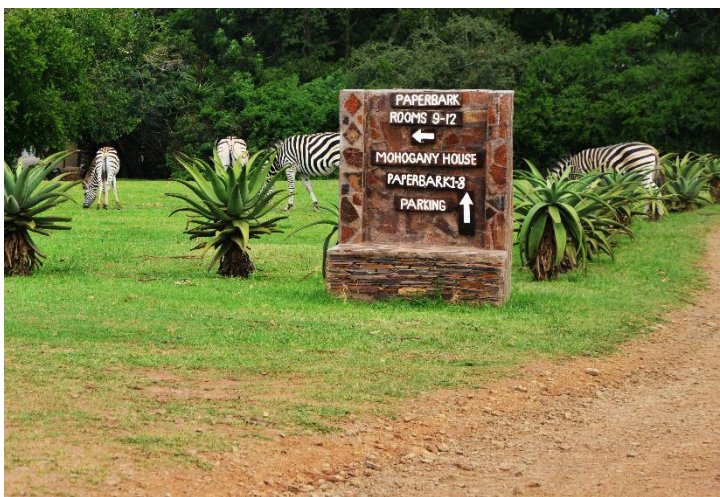
R1 620.00  
Per Room

5 x double bedded rooms with a bath  
7 x twin bedded rooms with a bath

(Some rooms have a bath & shower –please request) Paperbark Lodge centres on the “Old Farm Barn” with the original door still in place.

Beautifully restored, with a large fireplace, polished floors and fold back windows that allow for natural light and ventilation, this is the venue for the lodge’s restaurant. The room décor is simple, yet dramatic, including wildlife painting, shale walls and the clever use of wood. The

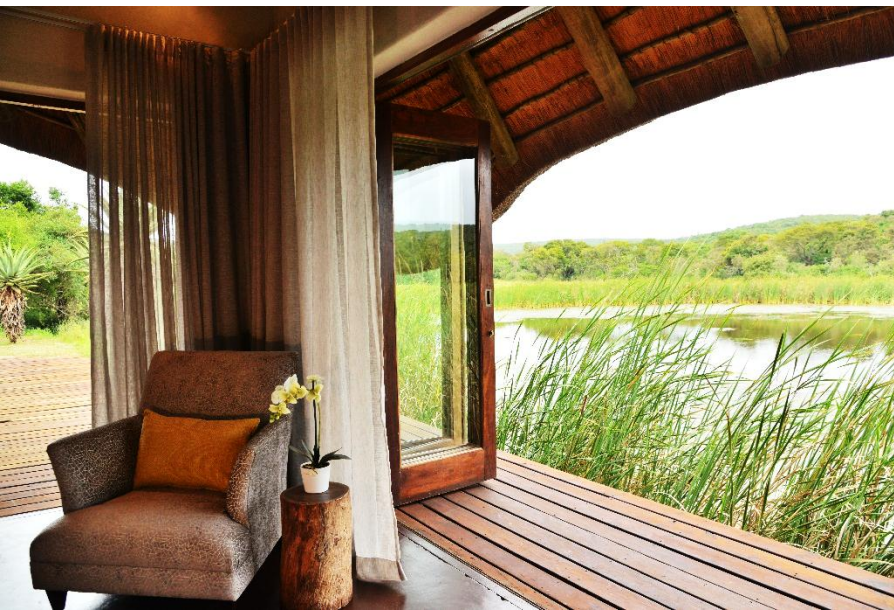
lodge surrounds an open grass area with spectacular views to the west of the open plains of the reserve. Paperbark Room 9 is normally our Bridal prep room perfect for groom or bride the night before the wedding. When booking your Paperbark room be sure to ask about the outside showers.



# Leadwood Cottages



R2 750.00  
Per Room



6 x double bedded cottages with a bath and shower

Our Leadwood cottages are very exclusive, there are 6 units in total situated

adjacent to the Leadwood Manor House. The cottages are normally booked

for the honeymoon suite, very special romantic getaways. Each cottage has its own private deck, with a bath and shower. Built by a team of artisans with

locally sourced shale, Leadwood Lodge combines exceptional architecture,

towering thatch and resplendent finishes against a backdrop of breath taking

natural beauty. The décor is an eclectic merging of antique and organic Africa

with one-of-a-kind artistic elements. The lodge was designed on an ethic of

'nothing straight, nothing painted' and the final results are a masterpiece of earth,

water, glass and hardwoods.



# Fisherman's Cottage

This self-catering, stand-alone house with a splendid view of the riverine bush and surrounded by open plains is easily visible as you drive onto the reserve. Comfortably accommodating two people, each cottage has a private concealed Boma area that is ideal for a relaxing braai under the stars or just to sit around the fire. Fisherman's Cottage is a serene retreat where you can unwind while looking out over the Fisherman's Dam, listen to the calls of African Fish Eagles and watch the wildlife grazing from the comfort of your veranda. The Cottages are self-catering; however, if you would prefer to dine at the Tala Restaurant for any meals, please can you book in advance. All meals and drinks are to be settled at the reception at the end for your stay.



## Self Catering Checklist

We Provide:

### Braai Facilities & Electricity -

Bring your own – Charcoal, Matches, Firelighters / Firewood (Available to Purchase) and a Torch.

### Furniture -

Double bed / 2 Single beds (Depending on unit), Cupboard, Dressing table & stool, Dinner table and 2 Chairs.

Bring your own – Blankets (Extra) in Winter

### Cutlery, Crockery and Utensils –

Champagne Glasses, Red wine glass, Beer glass, Tea cups & saucers, Dinner plates, Breakfast bowls, Tea spoons, Soup spoons, Forks, Steak knives, knives, Bread knife, Wooden spoons, Serving spoon, Tongs, Ladle, Pasta spoon, Spachelor, Cheese grater, Whisk, Bottle Opener, Can Opener, Potato peeler, Cutting Board, Small / Medium / Large Pot and Frying Pan.

Bring your own – Dish Cloths

### Electrical Appliances –

Kettle, Toaster, Microwave, Two plate oven and Bar Fridge, Heater.

### Housekeeping -

Bedding, Bath & Hand Towels and Bins provided.

Bring your own – Swimming towels



**R8 65.00**  
**Self Catering**  
**Per Room**

# Figtree House



4 x twin bedded rooms with a bath and shower  
1 x double bedded room with a bath and shower  
Figtree House is self catering accommodation –  
Figtree House is a fully serviced house for groups  
of up to ten. The homestead has an old-world  
farm house atmosphere and each room has direct  
access to the surrounding garden. A veranda off  
the main lounge overlooks the boma braai area  
with the rolling hills of Tala in the background. All  
five rooms have an en-suite bathroom, opening  
up to a communal open plan lounge with a bar.  
The large dining room tables are ideal for  
breakfast or dinner in the privacy of your own  
house. Being only a walking distance from the  
Figtree Barn and the Figtree Auditorium, makes  
Figtree House the perfect place to rest after a  
long days conferencing or even a night after a  
wedding. Because of its convenient location next  
to the Fig Tree Barn, Figtree House is ideal as a  
wedding party preparation area. Figtree House  
has instant appeal and provides the perfect  
setting for small conferences and tranquil  
getaways with family and friends. All meals are  
served at the Tala Restaurant, if you would like to  
join us for dinner please can you book in  
advance, all meals and drinks are to be settled at  
the reception at the end for your stay.



**R1 850.00**  
**Per Room**